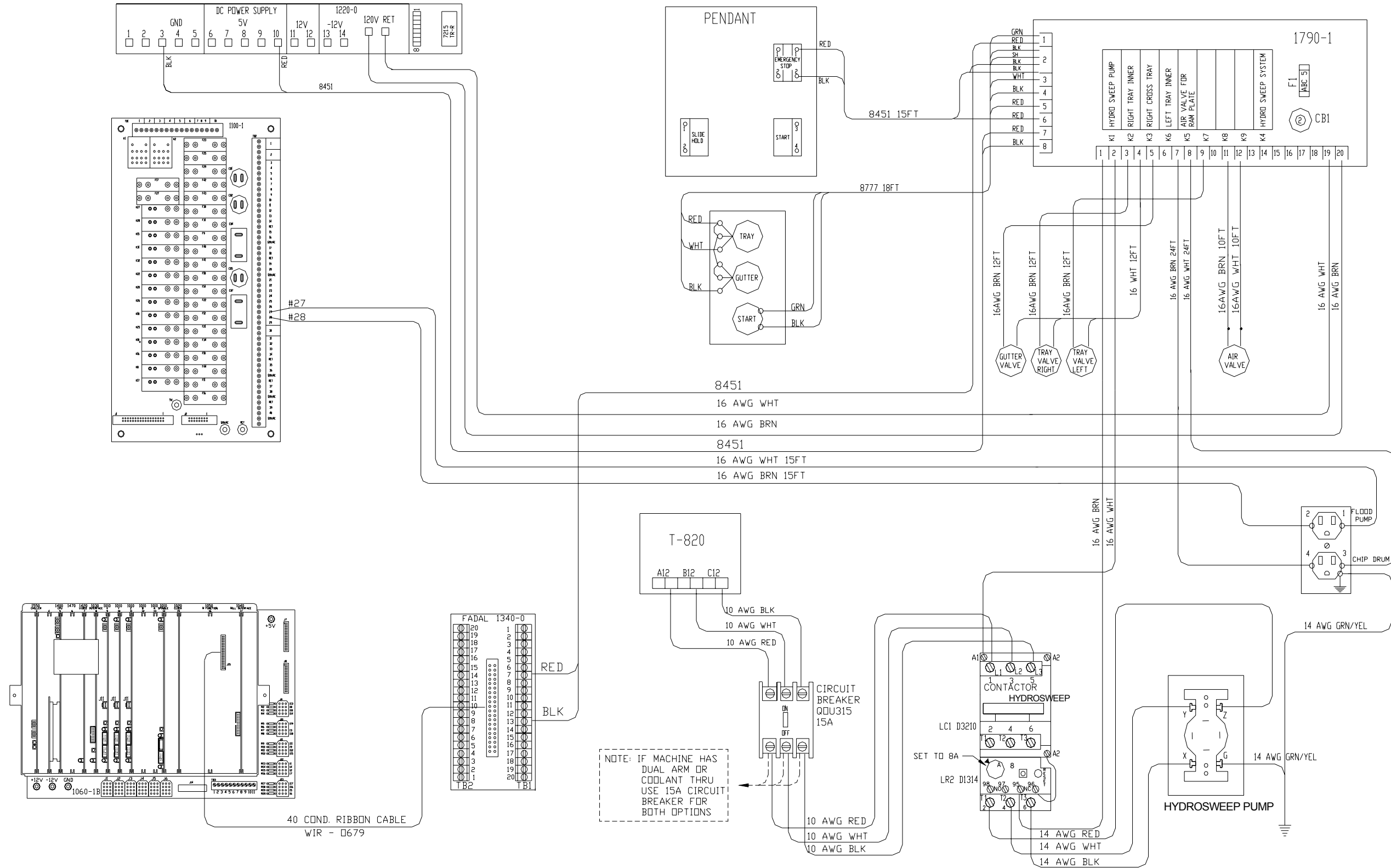


# SECTION 5

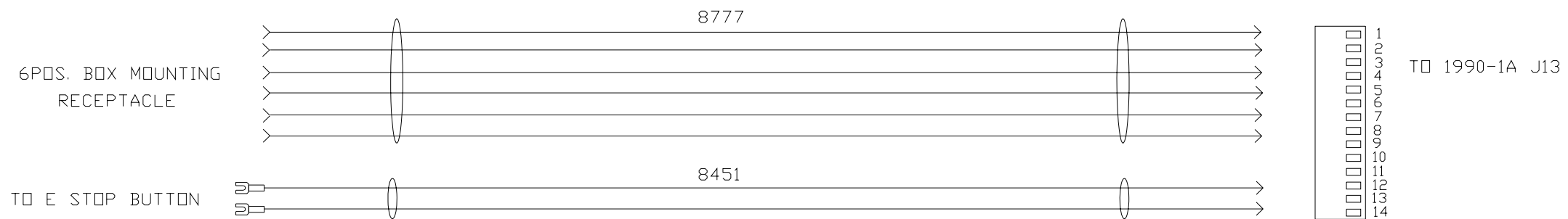
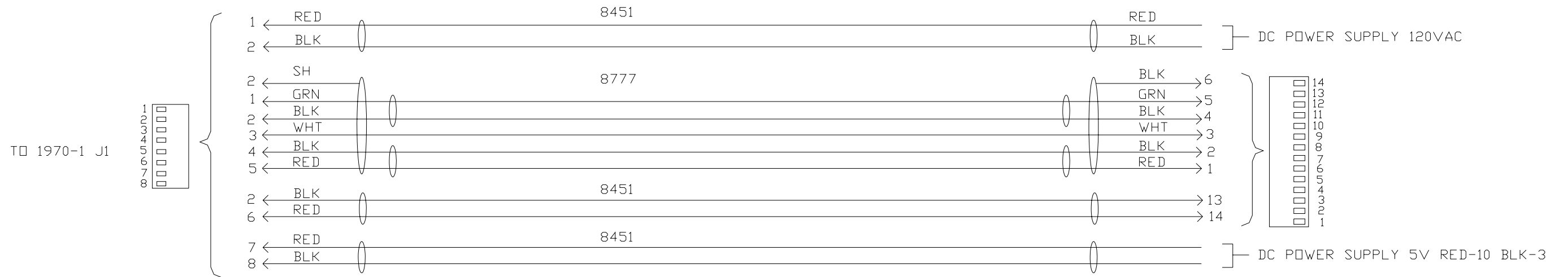
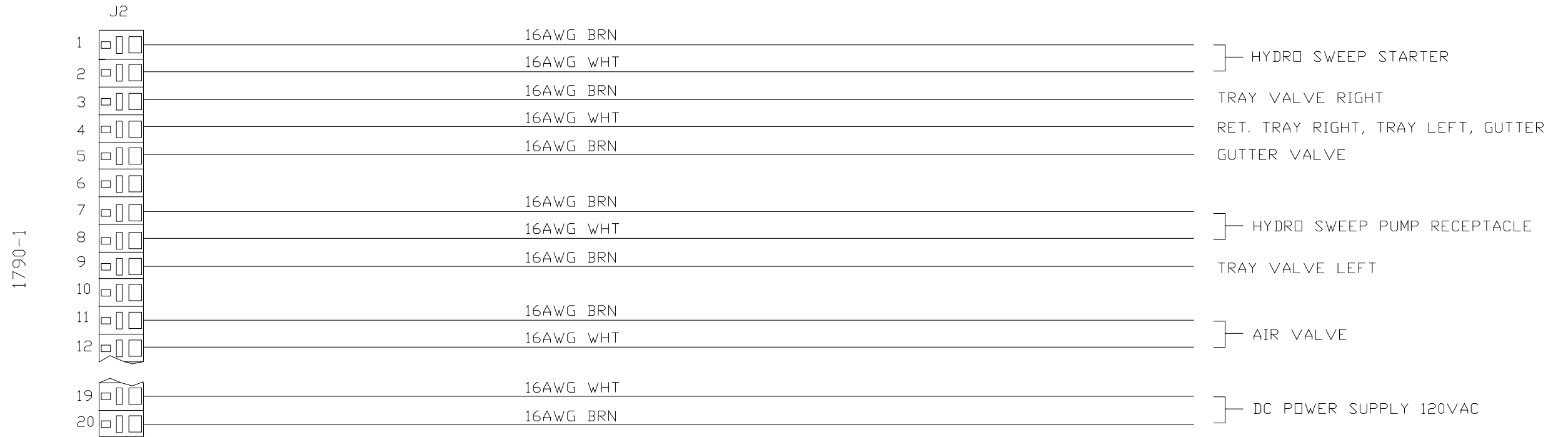
## Options

# WRG\_0011C\_sht1of2\_hydro\_sweep\_3valves

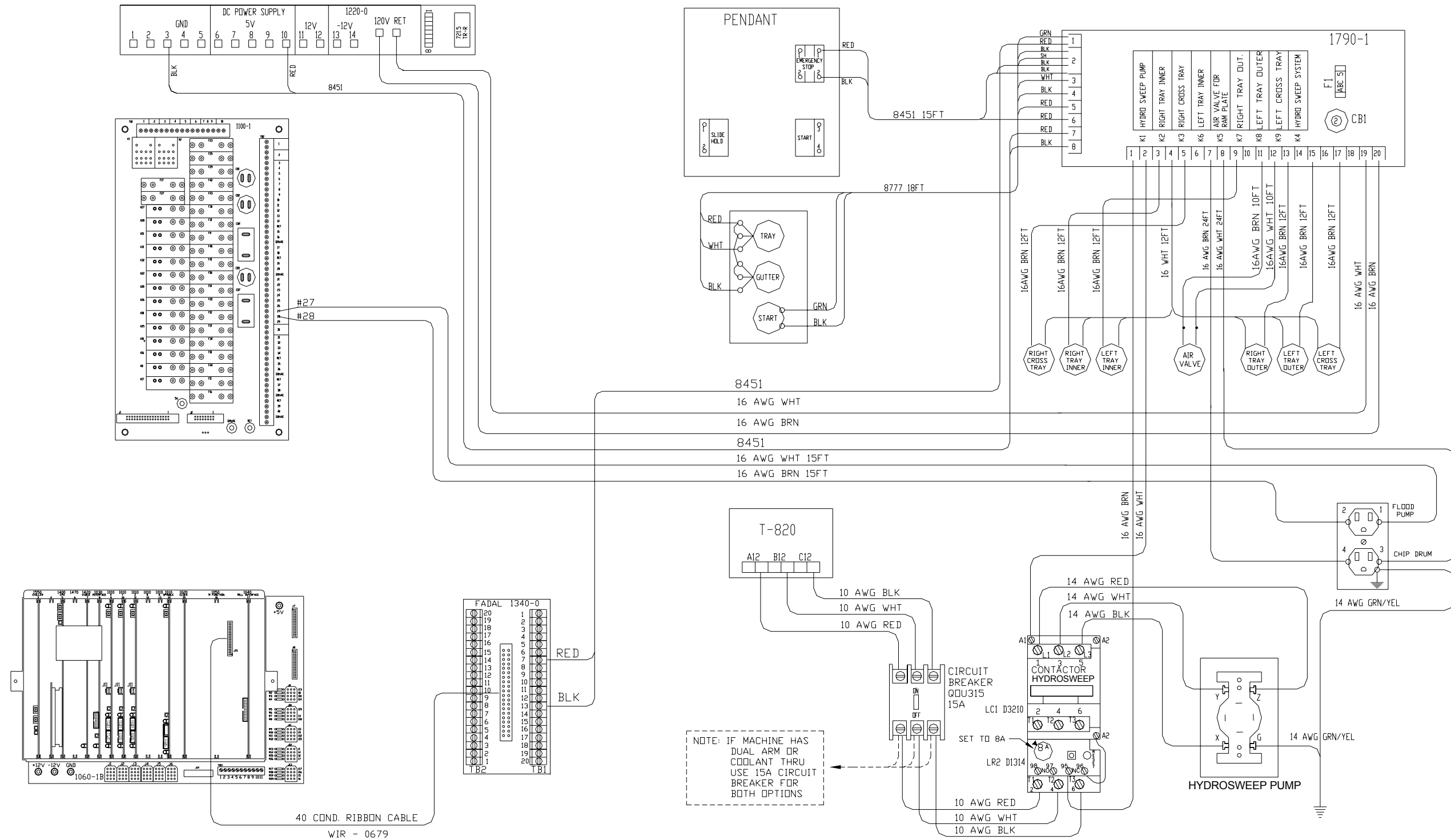


NOTE: INSTALL EPROM VERSION 5.4 ON 1790-1 BOARD.

# WRG\_0011A\_sht2of2\_hydro\_sweep\_harness



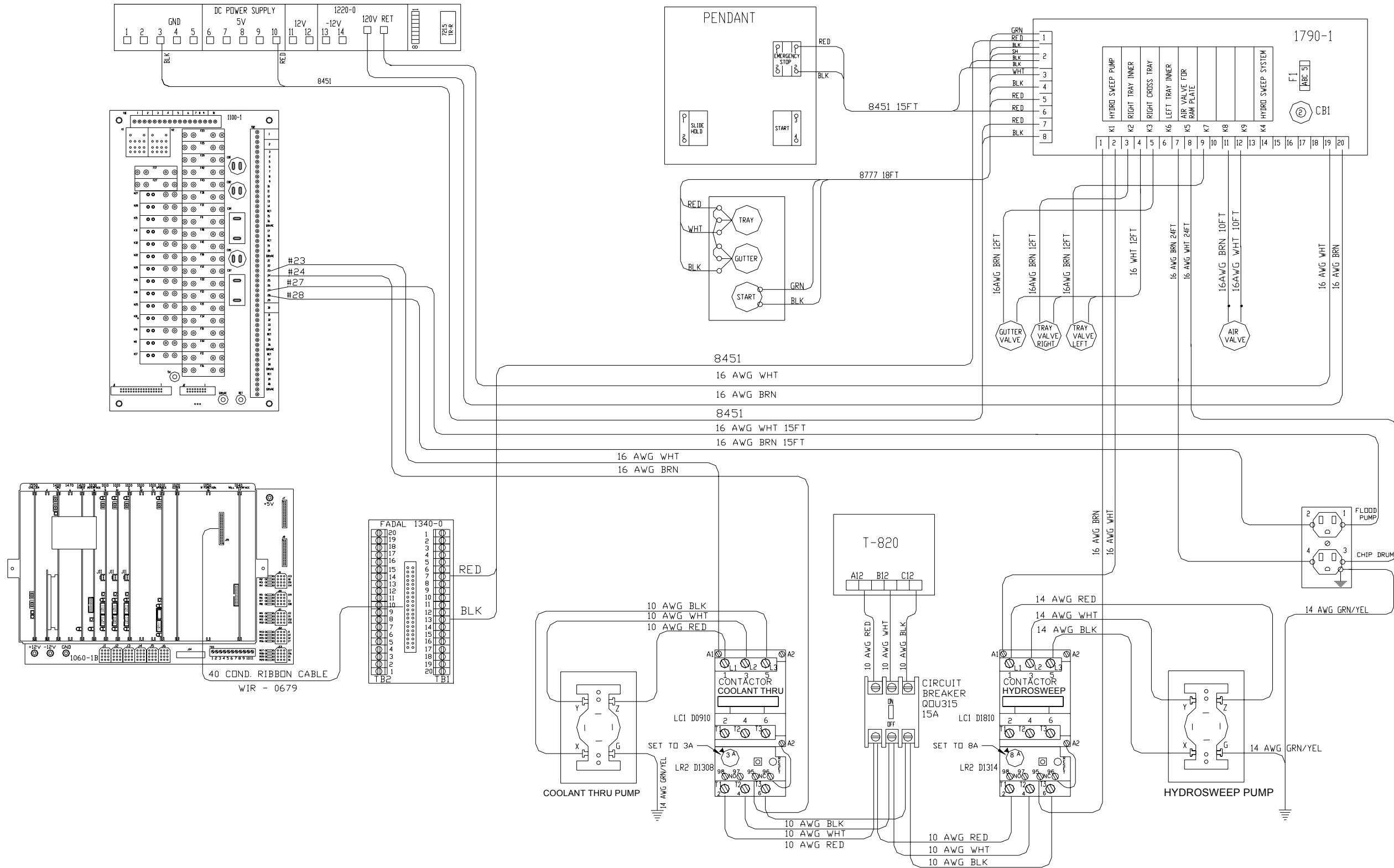
# Wrg\_0012C\_hydro\_sweep\_6valves



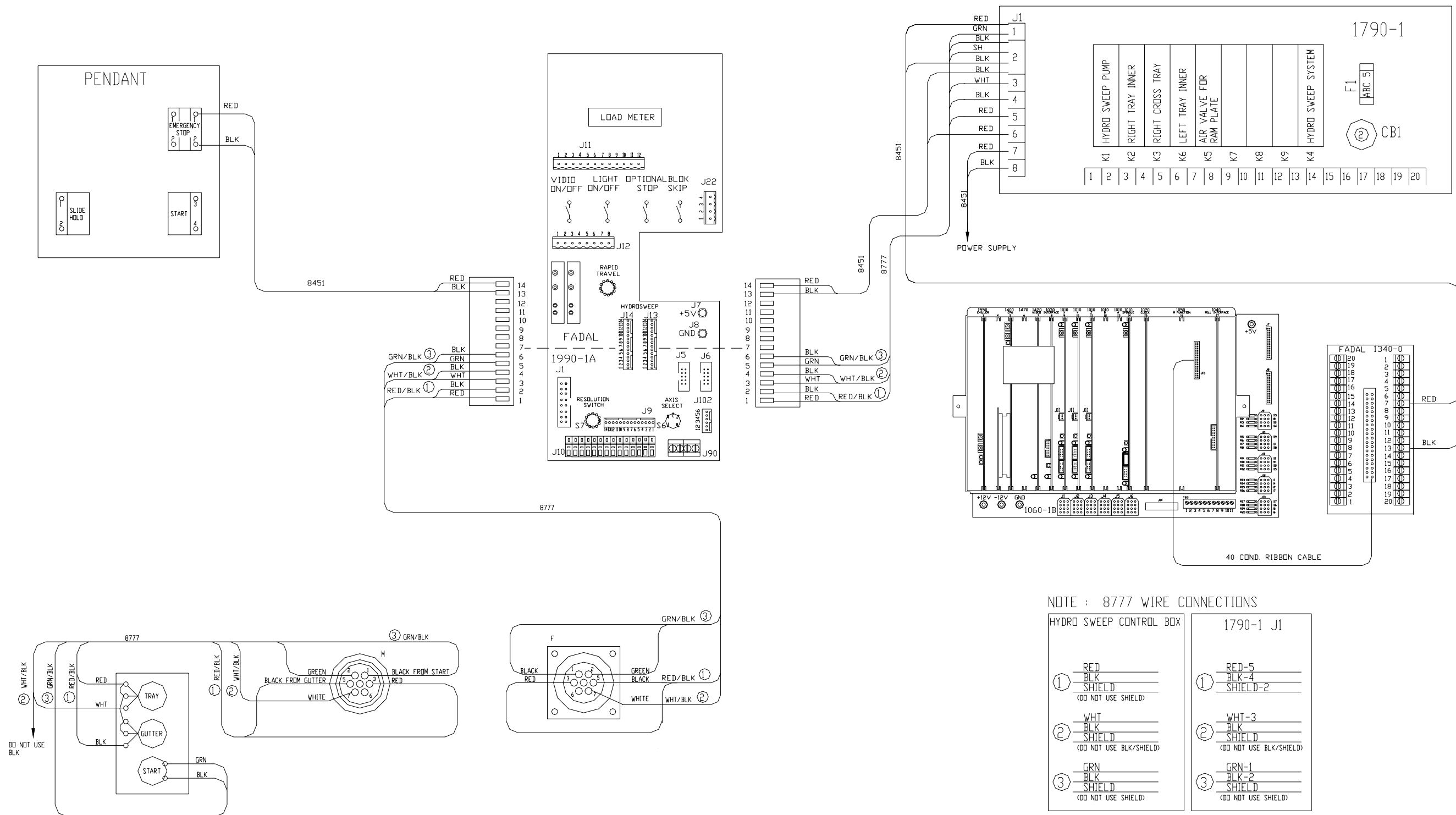
NOTE: IF MACHINE HAS DUAL ARM OR COOLANT THRU USE 15A CIRCUIT BREAKER FOR BOTH OPTIONS

NOTE: INSTALL EPROM VERSION 6.4 ON 1790-1 BOARD.

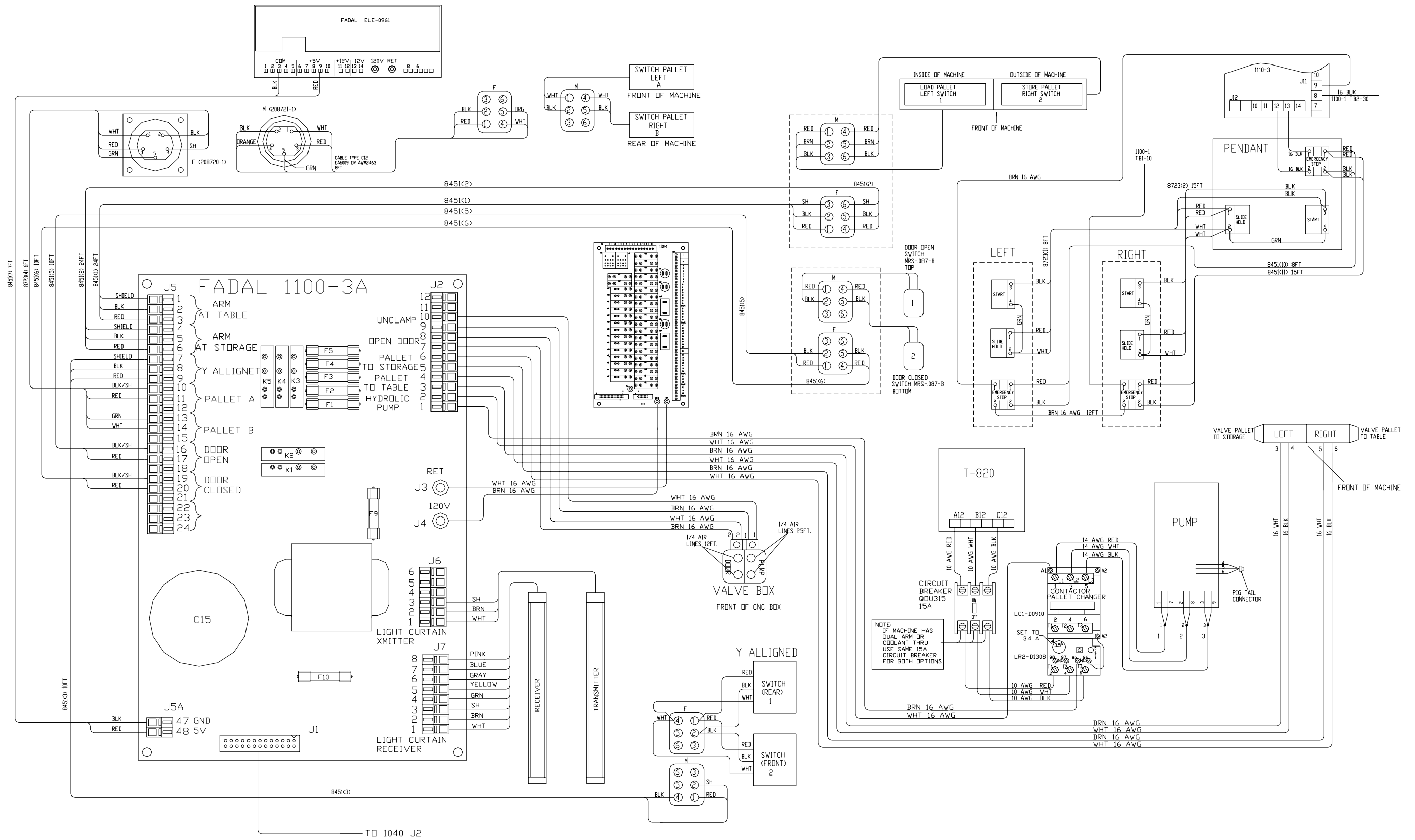
# Wrg\_0013B\_hydro\_sweep\_coolant\_thru



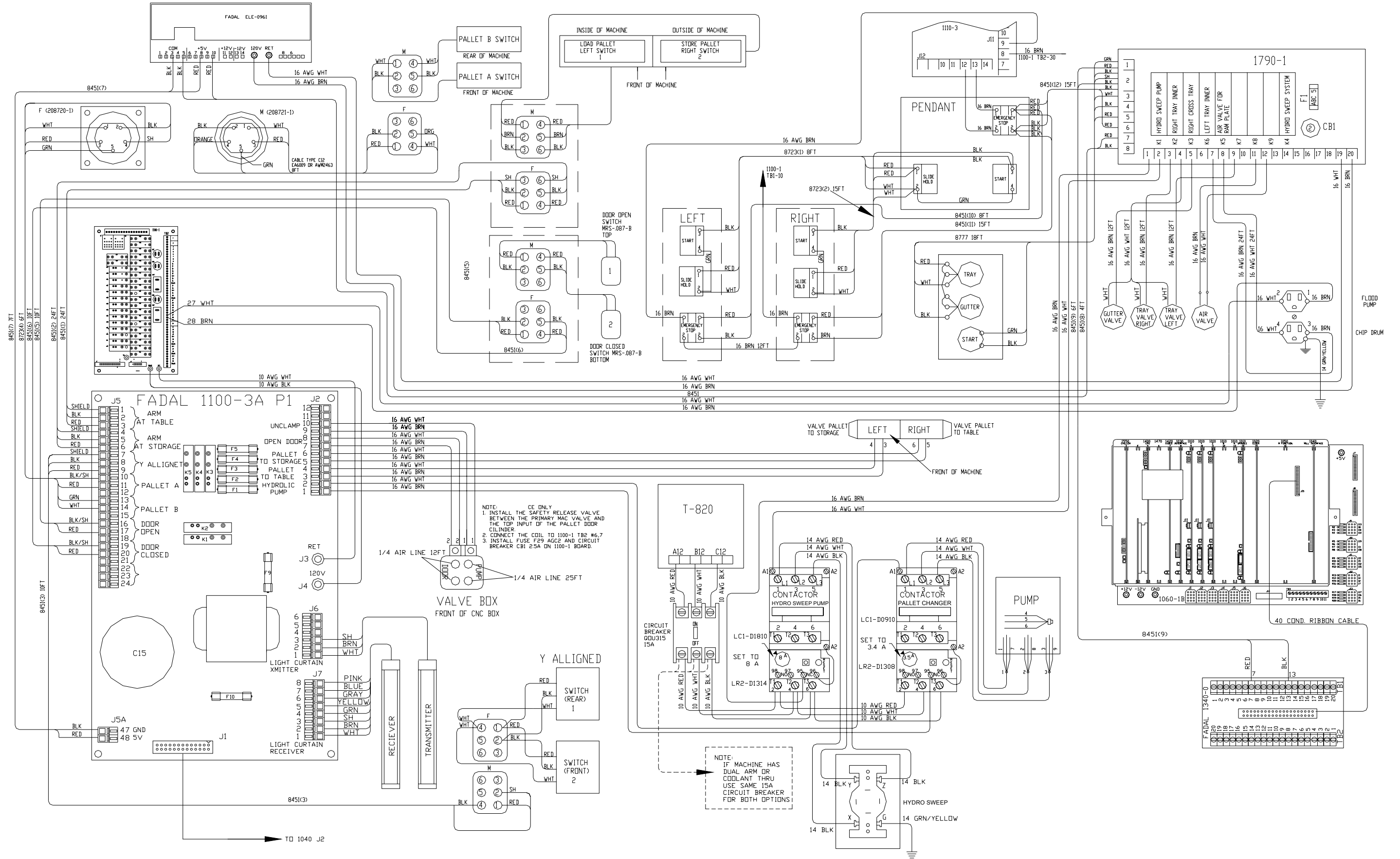
# Wrg\_0022A\_hydro\_sweep\_1990\_1a\_board



# Wrg\_0017B\_pallet\_changer



# Wrg\_0018B\_pallet\_changer\_hydro\_sweep

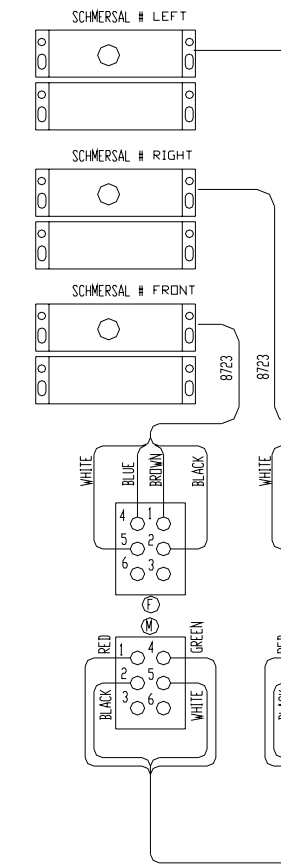




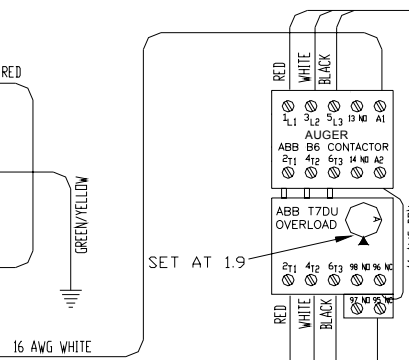
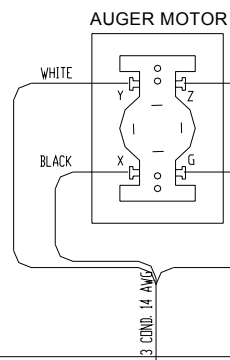
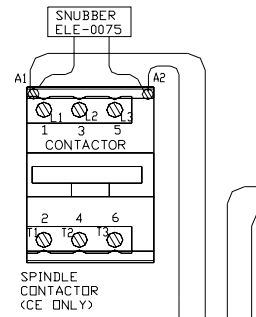
# Wrg\_0037F\_auger\_washdown\_coolantthru

## 1310 PIN LIST

- J1**
  - 120 VAC (INPUT)
  - PUMP
  - VALVE #1
  - VALVE #2
  - VALVE #3
  - 120 RETURN (INPUT)
  - E-STOP (INPUT)
  - CONTACTOR FOR AUGER
  - CONTACTOR FOR SPINDLE
  - RETURN FOR SPINDLE CONTACTOR
  - RETURN FOR AUGER CONTACTOR AND PUMP STARTER
  - RETURN FOR VALVE COILS
- J2**
  - 1-3 AUGER MOTOR
  - 4-7 220 VAC
- J3**
  - START/STOP BUTTON
  - MODE SWITCH
  - M-FUNCTION INPUT
  - POT
  - +5V FOR POT
  - GROUND
  - EXTERNAL RESET
  - +5V
  - +5V (INPUT)
  - GROUND (INPUT)
  - EXTERNAL SLIDE HOLD INPUT
  - GROUND FOR EXTERNAL SLIDE HOLD
- J4**
  - LEFT DOOR SWITCH (BLK)
  - LEFT DOOR SWITCH (WHT)
  - LEFT DOOR SWITCH (RED)
  - LEFT DOOR SWITCH (GRN)
  - RIGHT DOOR SWITCH (BLK)
  - RIGHT DOOR SWITCH (WHT)
  - RIGHT DOOR SWITCH (RED)
  - RIGHT DOOR SWITCH (GRN)
  - FRONT DOOR SWITCH (BLK)
  - FRONT DOOR SWITCH (WHT)
  - FRONT DOOR SWITCH (RED)
  - FRONT DOOR SWITCH (GRN)



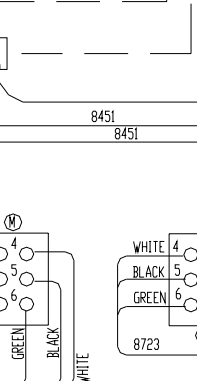
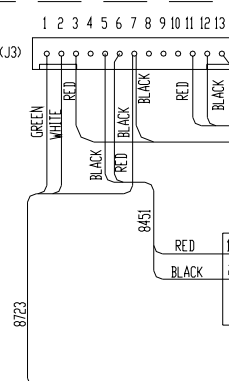
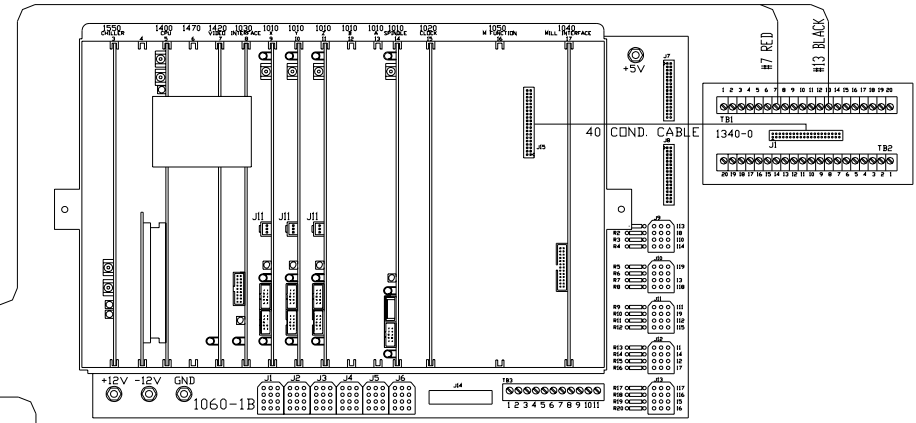
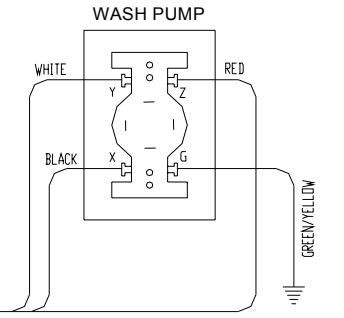
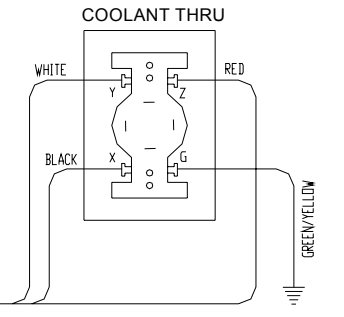
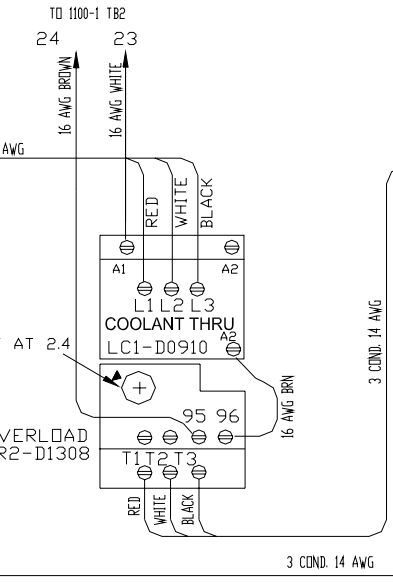
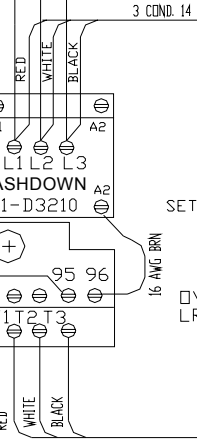
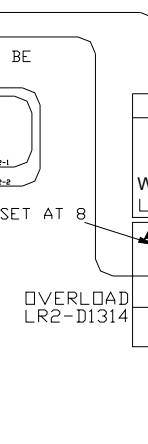
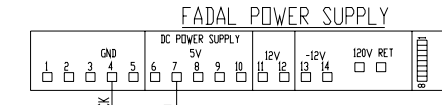
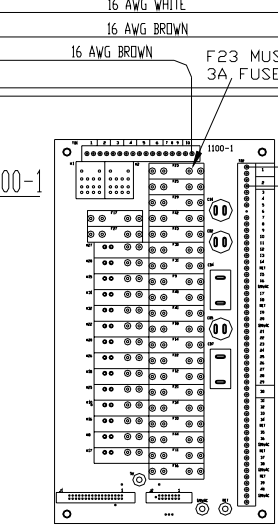
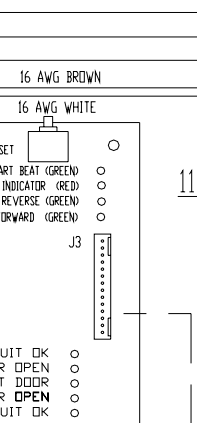
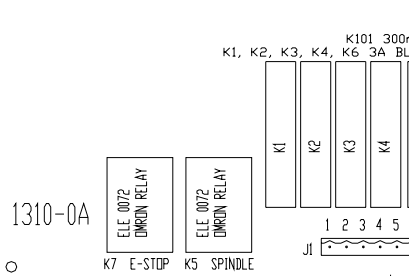
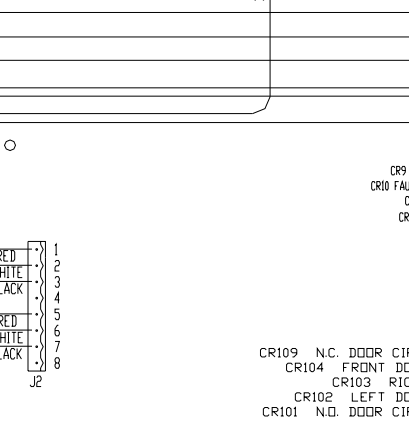
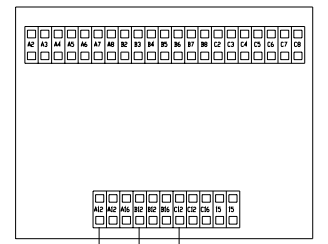
- K1 - SSR ELE-0070 TURN ON PUMP.
- K2 - SSR ELE-0070 VALVE 1.
- K3 - SSR ELE-0070 VALVE 2.
- K4 - SSR ELE-0070 VALVE 3.
- K6 - SSR ELE-0070 3 POLE RELAY 240V.
- K101 - SSR ELE-0101 SPINDLE RELAY.



NOTE: IF MACHINE HAS ALSO HAS PALLET CHANGER AND DUAL ARM TOOL CHANGER THEN A SECOND 15A CIRCUIT BREAKER WILL BE REQUIRED. UL LIMIT FOR BRANCH MOTOR PROTECTION IS 15 A.

CIRCUIT BREAKER QOU315 15A

T-820 TRANSFORMER

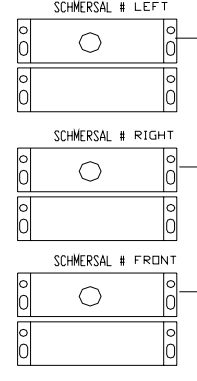


START/STOP AUGER/WASH POT

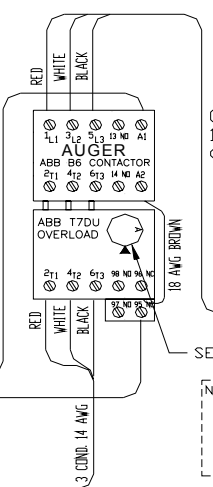
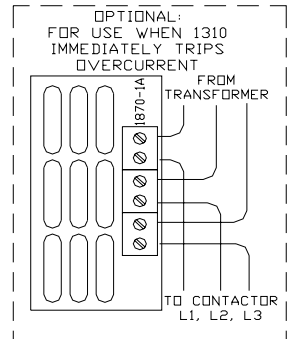
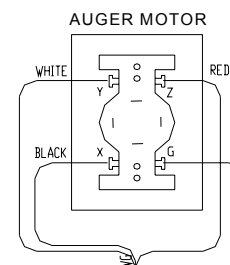
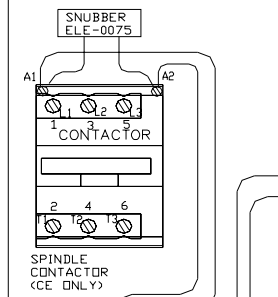
# Wrg\_0693J\_auger\_washdown\_wiring\_diagram

## 1310 PIN LIST

- J1**
  - 120 VAC (INPUT)
  - PUMP
  - VALVE #1
  - VALVE #2
  - VALVE #3
  - 120 RETURN (INPUT)
  - E-STOP (INPUT)
  - CONTACTOR FOR AUGER
  - CONTACTOR FOR SPINDLE
  - RETURN FOR SPINDLE CONTACTOR
  - RETURN FOR AUGER CONTACTOR
  - AND PUMP STARTER
  - RETURN FOR VALVE COILS
- J2**
  - 1-3. AUGER MOTOR
  - 4-7. 220 VAC
- J3**
  - START/STOP BUTTON
  - MODE SWITCH
  - M-FUNCTION INPUT
  - POT
  - +5V FOR POT
  - GROUND
  - EXTERNAL RESET
  - +5V
  - +5V (INPUT)
  - GROUND (INPUT)
  - EXTERNAL SLIDE HOLD OUTPUT
  - GROUND FOR EXTERNAL SLIDE HOLD
- J4**
  - LEFT DOOR SWITCH (BLK)
  - LEFT DOOR SWITCH (WHT)
  - LEFT DOOR SWITCH (RED)
  - LEFT DOOR SWITCH (GRN)
  - RIGHT DOOR SWITCH (BLK)
  - RIGHT DOOR SWITCH (WHT)
  - RIGHT DOOR SWITCH (RED)
  - RIGHT DOOR SWITCH (GRN)
  - FRONT DOOR SWITCH (BLK)
  - FRONT DOOR SWITCH (WHT)
  - FRONT DOOR SWITCH (RED)
  - FRONT DOOR SWITCH (GRN)



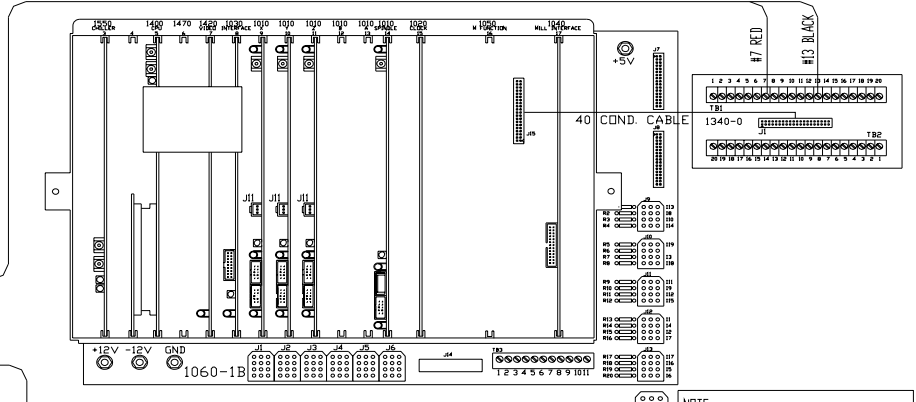
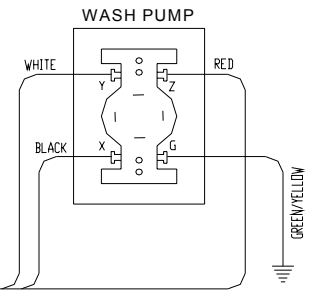
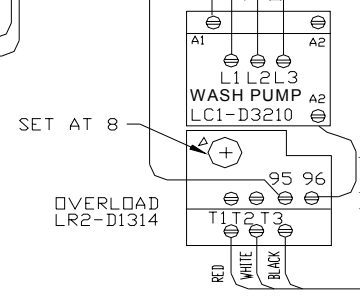
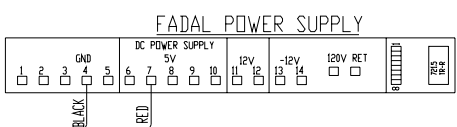
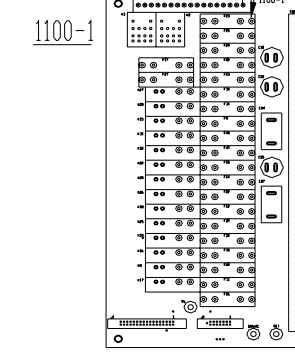
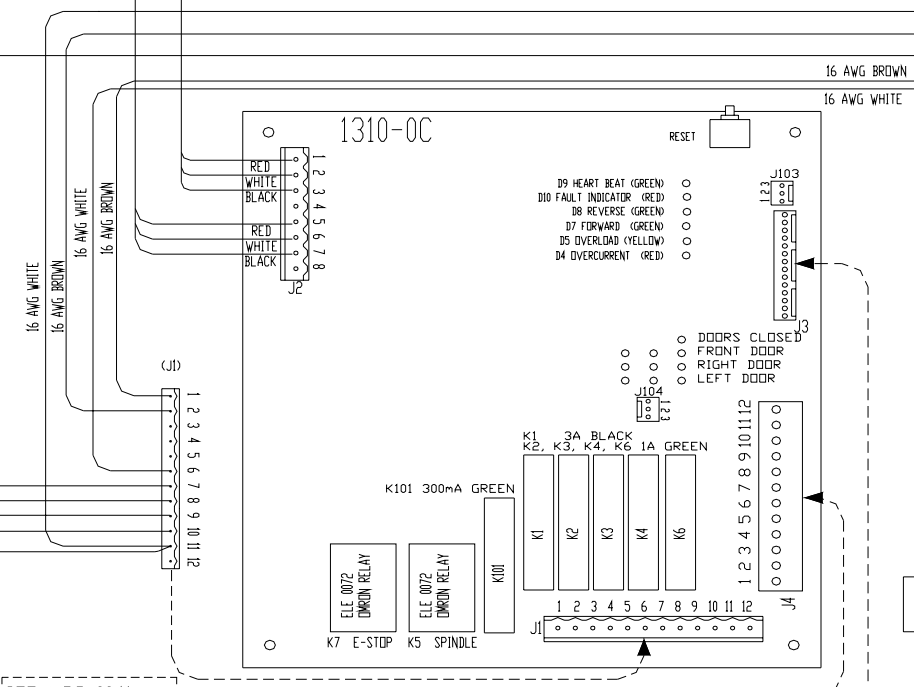
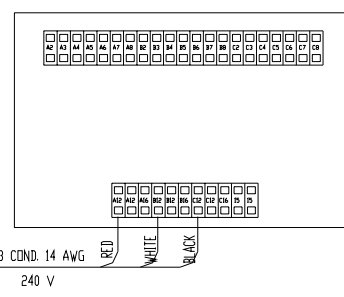
- K1 - SSR ELE-0070 TURN ON PUMP.
- K2 - SSR ELE-0070 VALVE 1.
- K3 - SSR ELE-0070 VALVE 2.
- K4 - SSR ELE-0070 VALVE 3.
- K6 - SSR ELE-0070 3 POLE RELAY 240V.
- K101 - SSR ELE-0101 SPINDLE RELAY



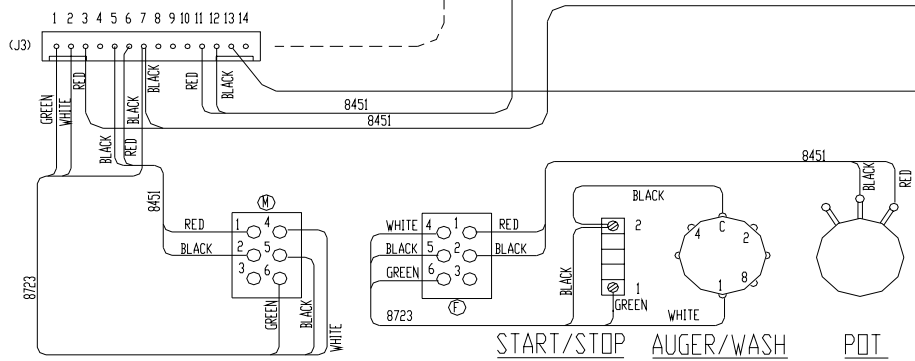
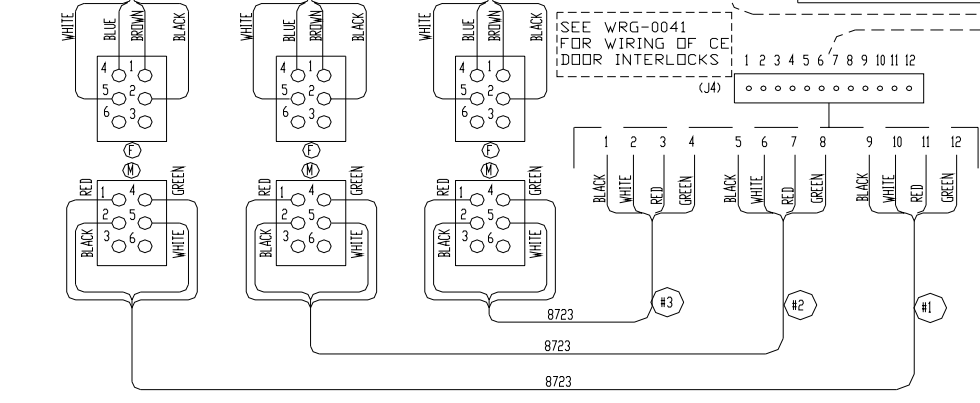
CIRCUIT BREAKER 15A 00U315 (IF MORE THAN 15A IS REQUIRED BECAUSE DATC, PALLET CHANGER, AND COOLANT THRU ARE ADDED, THEN A SECOND CIRCUIT BREAKER WILL BE NEEDED.)  
SET AT 1.9A

NOTE: IF MACHINE HAS COOLANT THRU, SEE WRG-0037. IF MACHINE HAS COOLANT THRU, DATC, AND PALLET CHANGER, A SECOND 15 A CIRCUIT BREAKER WILL BE NEEDED.

## T-820 TRANSFORMER



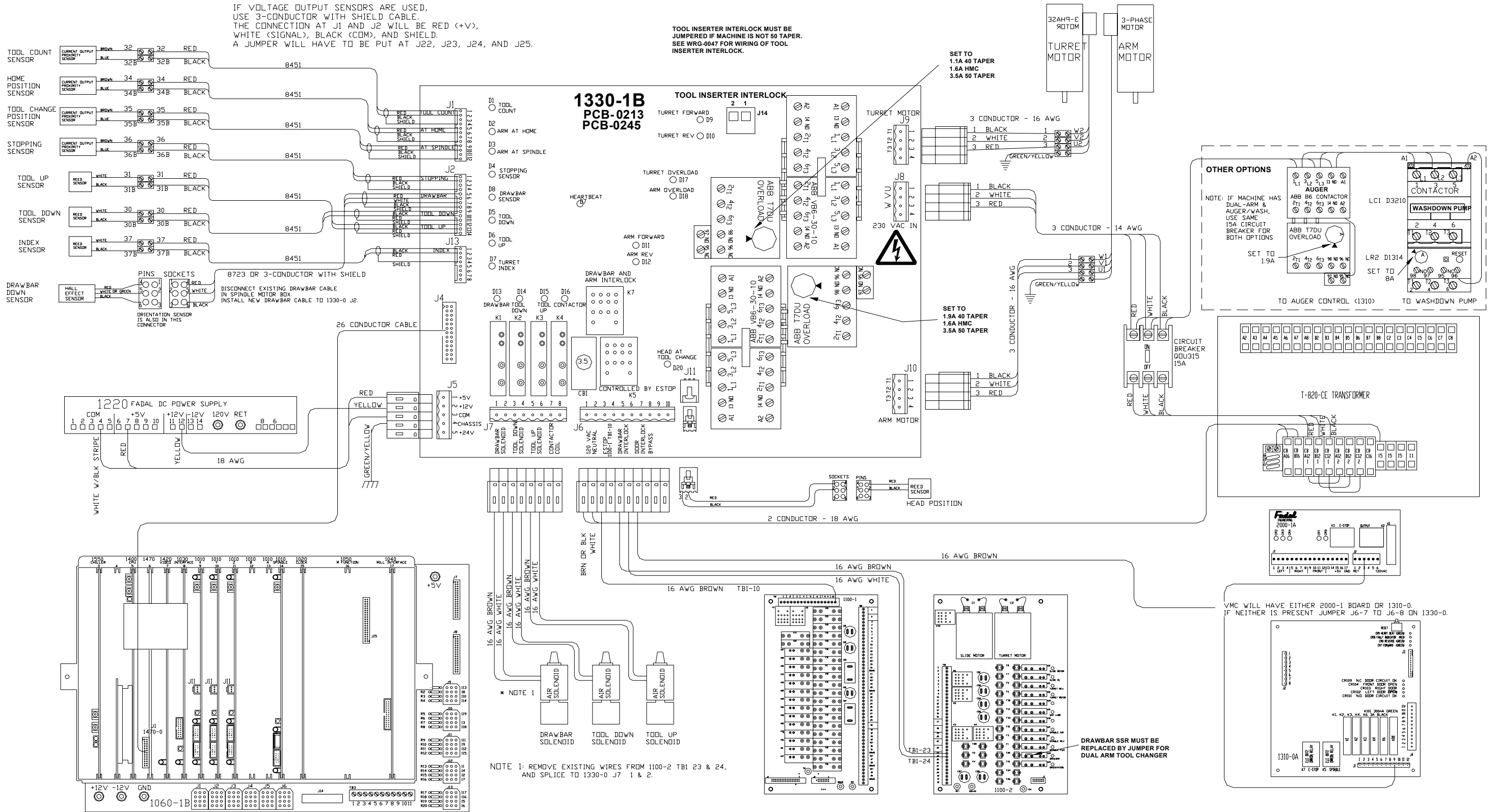
NOTE: REMOVE DOOR INTERLOCK FROM J13 PIN 8 & INSTALL AUGER INTERLOCK



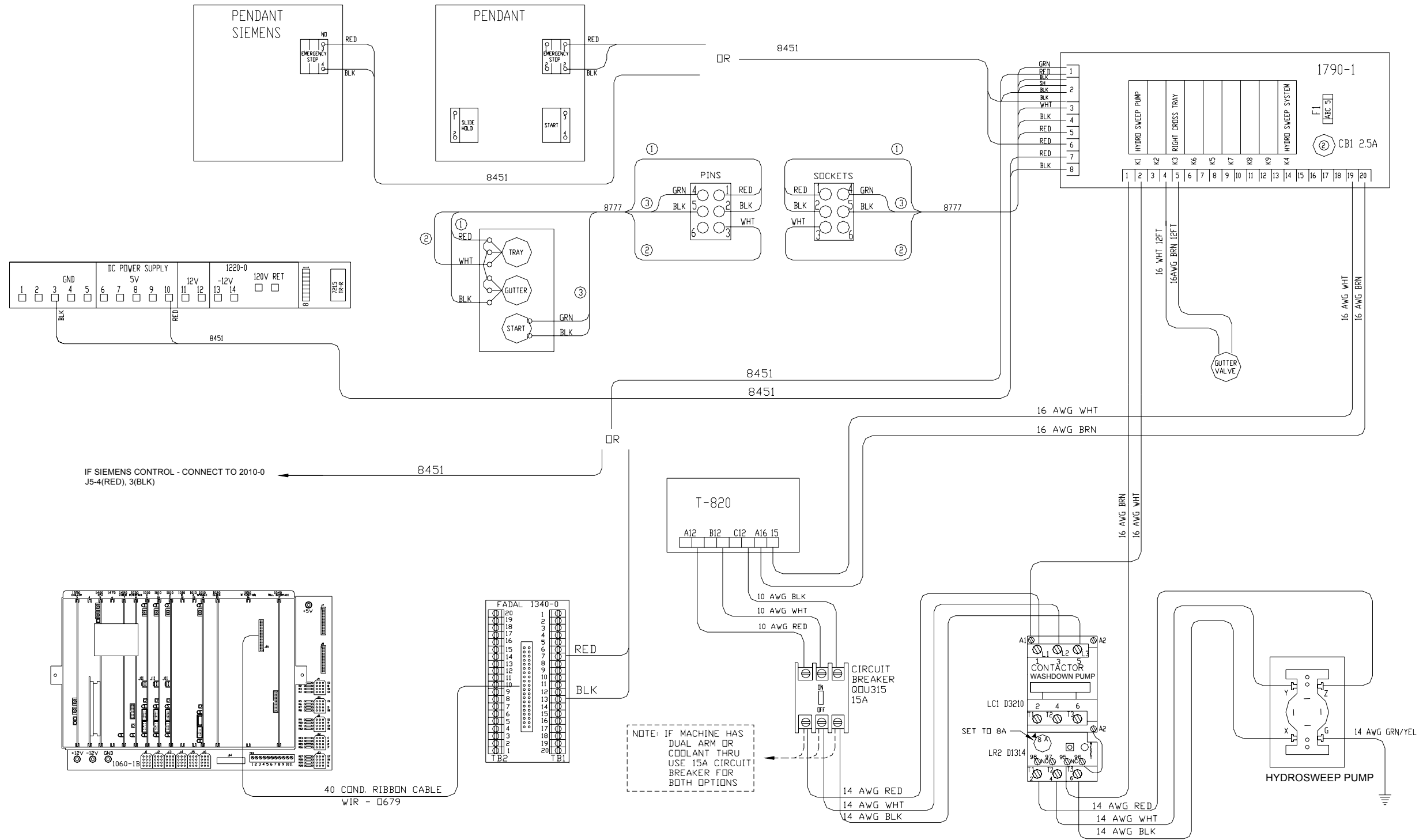
# WRG\_0001K\_Dual\_Arm\_Tool\_Changer\_1330-1

IF VOLTAGE OUTPUT SENSORS ARE USED,  
USE 3-CONDUCTOR WITH SHIELD CABLE.  
THE CONNECTION AT J1 AND J2 WILL BE RED (+V),  
WHITE (SIGNAL), BLACK (COM), AND SHIELD.  
A JUMPER WILL HAVE TO BE PUT AT J22, J23, J24, AND J25.

TOOL INSERTER INTERLOCK MUST BE  
JUMPERED IF MACHINE IS NOT 50 TAPER.  
SEE WRG-0047 FOR WIRING OF TOOL  
INSERTER INTERLOCK.

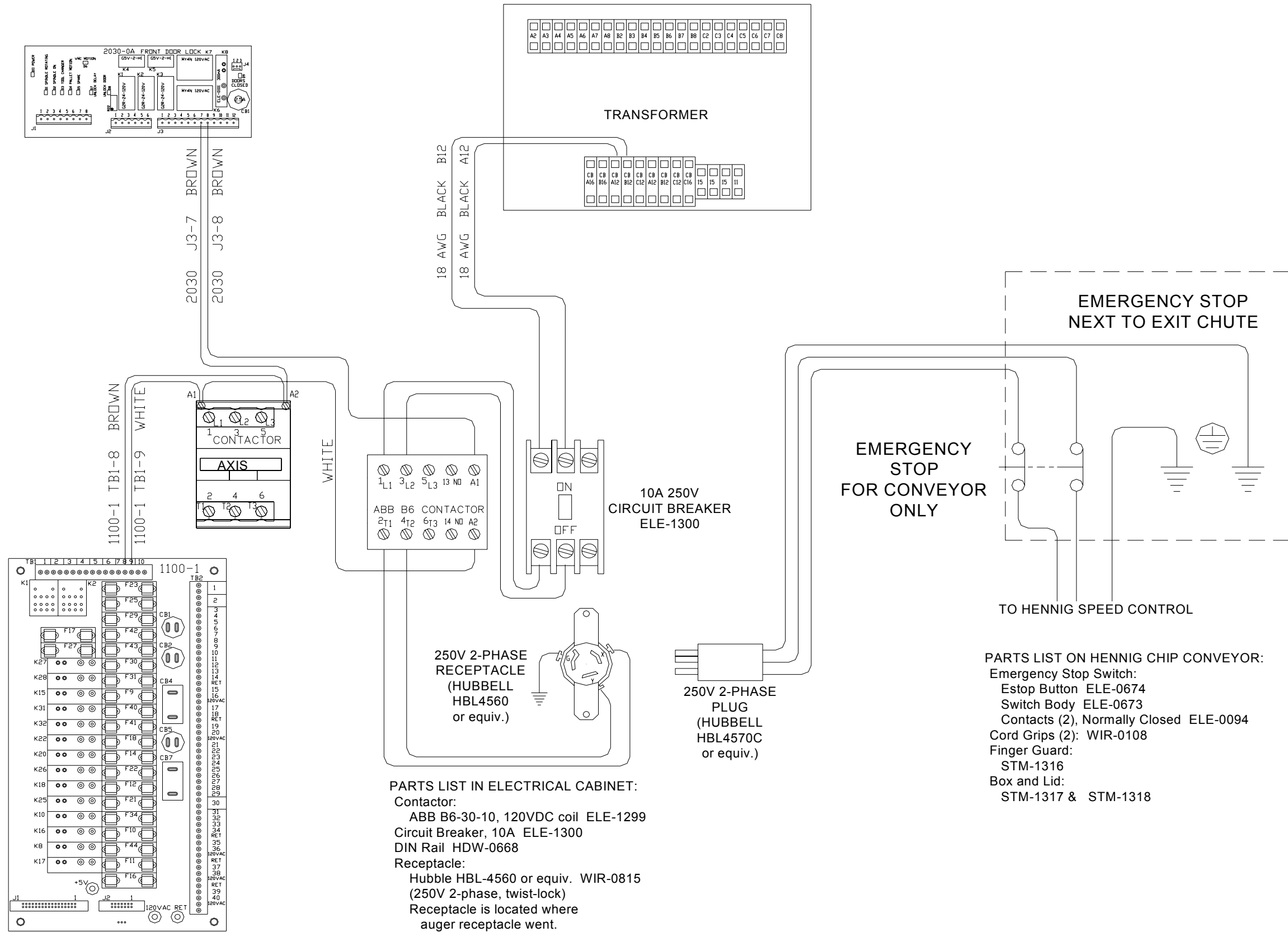


# WRG\_0044D\_6535\_washdown



NOTE: INSTALL EPROM VERSION 5.4 ON 1790-1 BOARD.

# WRG\_0045B\_CE\_wiring\_Hennig\_Chip\_Conveyor

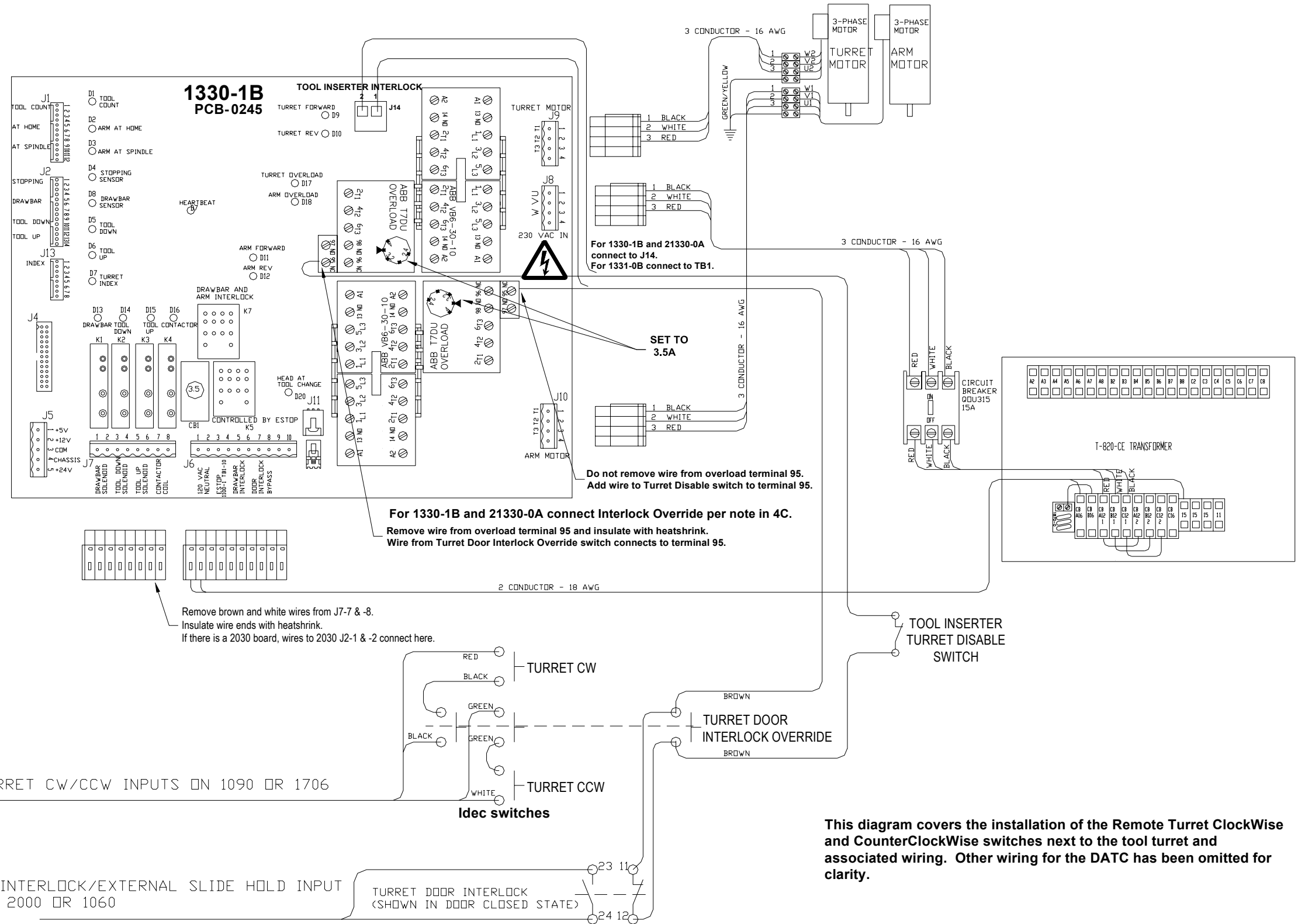
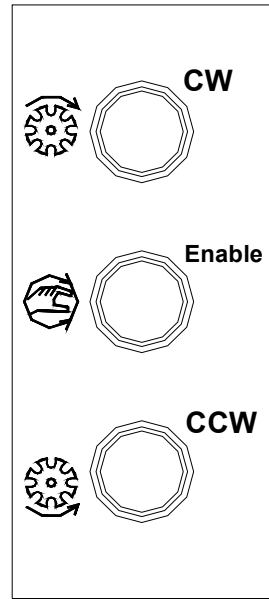


**PARTS LIST IN ELECTRICAL CABINET:**  
 Contactor:  
 ABB B6-30-10, 120VDC coil ELE-1299  
 Circuit Breaker, 10A ELE-1300  
 DIN Rail HDW-0668  
 Receptacle:  
 Hubbell HBL-4560 or equiv. WIR-0815  
 (250V 2-phase, twist-lock)  
 Receptacle is located where  
 auger receptacle went.

**PARTS LIST ON HENNIG CHIP CONVEYOR:**  
 Emergency Stop Switch:  
 Estop Button ELE-0674  
 Switch Body ELE-0673  
 Contacts (2), Normally Closed ELE-0094  
 Cord Grips (2): WIR-0108  
 Finger Guard:  
 STM-1316  
 Box and Lid:  
 STM-1317 & STM-1318

# WRG\_0047F\_Remote\_TurCW\_TurCCW\_for\_50\_Taper

## FACEPLATE FOR SWITCHES



For 1330-1B and 21330-0A connect to J14.  
For 1331-0B connect to TB1.

SET TO 3.5A

Do not remove wire from overload terminal 95.  
Add wire to Turret Disable switch to terminal 95.

For 1330-1B and 21330-0A connect Interlock Override per note in 4C.  
Remove wire from overload terminal 95 and insulate with heatshrink.  
Wire from Turret Door Interlock Override switch connects to terminal 95.

Remove brown and white wires from J7-7 & -8.  
Insulate wire ends with heatshrink.  
If there is a 2030 board, wires to 2030 J2-1 & -2 connect here.

TO REMOTE TURRET CW/CCW INPUTS ON 1090 OR 1706

TO DOOR INTERLOCK/EXTERNAL SLIDE HOLD INPUT ON 1310, 2000 OR 1060

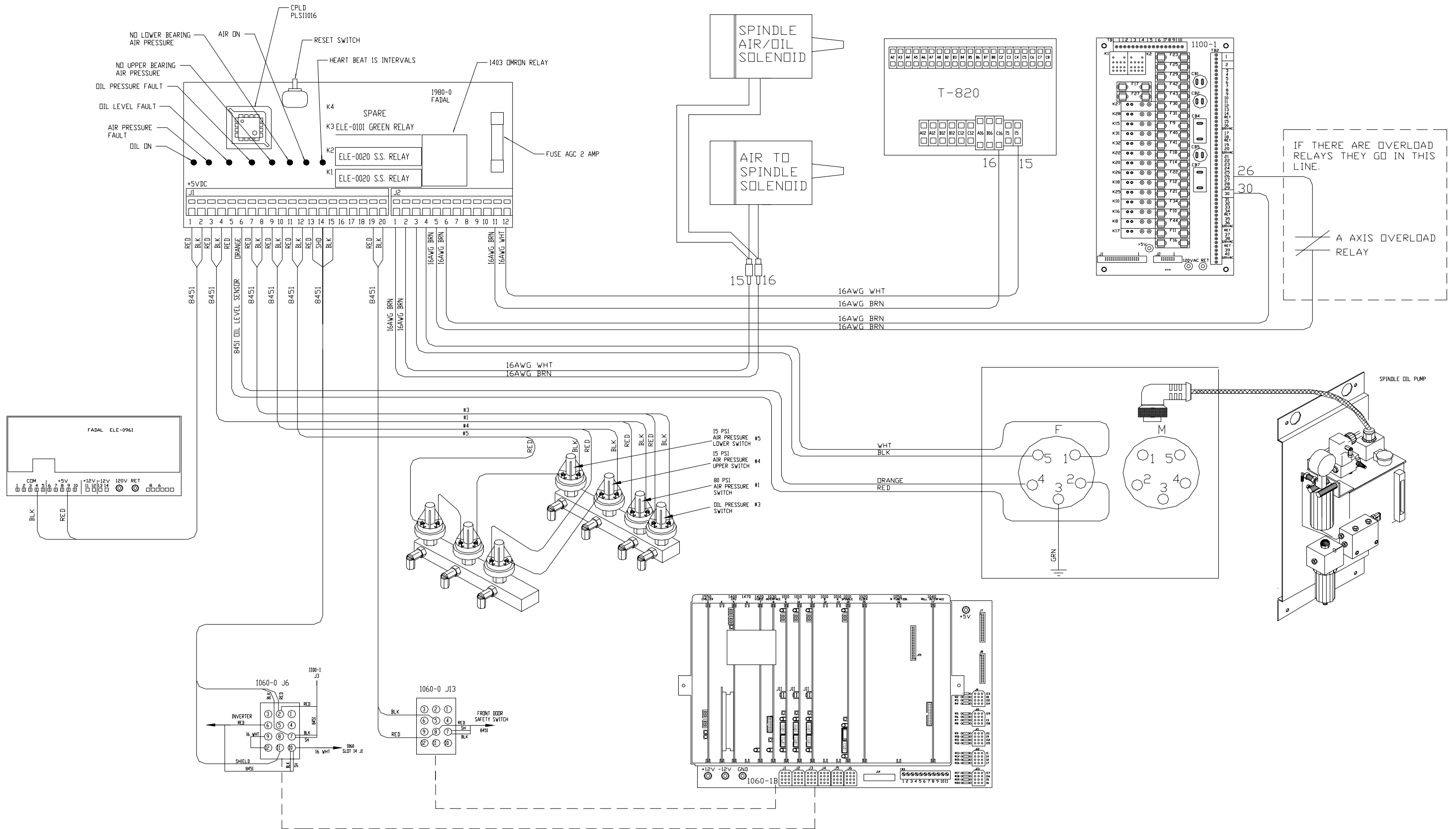
Idec switches

TOOL INSERTER  
TURRET DISABLE  
SWITCH

This diagram covers the installation of the Remote Turret ClockWise and CounterClockWise switches next to the tool turret and associated wiring. Other wiring for the DATC has been omitted for clarity.

Interlock switch:  
Pizzato FR692-D1,  
Omron D4DS-35FS,  
or equivalent

# Wrg\_0050A\_air\_oil\_system\_50tap



# Wrg\_0051A\_15\_pin\_connector\_50tap

